

SOX7 Antibody (Center)
Purified Rabbit Polyclonal Antibody (Pab)
Catalog # AP21090a**Specification**

SOX7 Antibody (Center) - Product Information

Application	WB,E
Primary Accession	Q9BT81
Reactivity	Human
Host	Rabbit
Clonality	Polyclonal
Isotype	Rabbit IgG
Calculated MW	42197

SOX7 Antibody (Center) - Additional Information**Gene ID** 83595**Other Names**

Transcription factor SOX-7, SOX7

Target/Specificity

This SOX7 antibody is generated from a rabbit immunized with a KLH conjugated synthetic peptide between 224-258 amino acids from the Central region of human SOX7.

Dilution

WB~~1:1000

E~~Use at an assay dependent concentration.

Format

Purified polyclonal antibody supplied in PBS with 0.09% (W/V) sodium azide. This antibody is purified through a protein A column, followed by peptide affinity purification.

Storage

Maintain refrigerated at 2-8°C for up to 2 weeks. For long term storage store at -20°C in small aliquots to prevent freeze-thaw cycles.

Precautions

SOX7 Antibody (Center) is for research use only and not for use in diagnostic or therapeutic procedures.

SOX7 Antibody (Center) - Protein Information**Name** SOX7

Function Binds to and activates the CDH5 promoter, hence plays a role in the transcriptional regulation of genes expressed in the hemogenic endothelium and blocks further differentiation into blood precursors (By similarity). May be required for the survival of both hematopoietic and

endothelial precursors during specification (By similarity). Competes with GATA4 for binding and activation of the FGF3 promoter (By similarity). Represses Wnt/beta-catenin-stimulated transcription, probably by targeting CTNNB1 to proteasomal degradation. Binds the DNA sequence 5'-AACAAAT-3'.

Cellular Location

Nucleus {ECO:0000255|PROSITE-ProRule:PRU00267}. Cytoplasm

Tissue Location

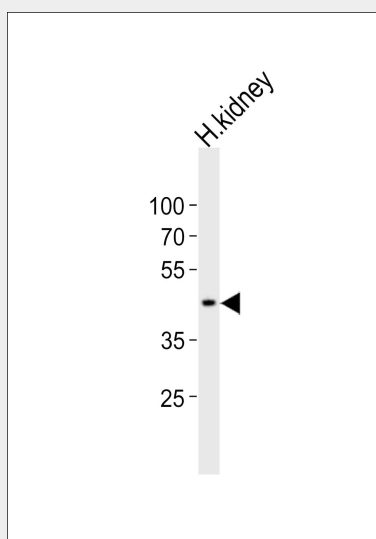
Widely expressed in adult and fetal tissues. Present both in mesenchymal and epithelial cells in some adult tissues, including colon. Tends to be down-regulated in prostate adenocarcinomas and colorectal tumors due to promoter hypermethylation

SOX7 Antibody (Center) - Protocols

Provided below are standard protocols that you may find useful for product applications.

- [Western Blot](#)
- [Blocking Peptides](#)
- [Dot Blot](#)
- [Immunohistochemistry](#)
- [Immunofluorescence](#)
- [Immunoprecipitation](#)
- [Flow Cytometry](#)
- [Cell Culture](#)

SOX7 Antibody (Center) - Images



Western blot analysis of lysate from human kidney tissue lysate, using SOX7 Antibody (Center)(Cat. #AP21090a). AP21090a was diluted at 1:1000. A goat anti-rabbit IgG H&L(HRP) at 1:10000 dilution was used as the secondary antibody. Lysate at 20ug.

SOX7 Antibody (Center) - Background

Binds to and activates the CDH5 promoter, hence plays a role in the transcriptional regulation of genes expressed in the hemogenic endothelium and blocks further differentiation into blood precursors (By similarity). May be required for the survival of both hematopoietic and endothelial

precursors during specification (By similarity). Competes with GATA4 for binding and activation of the FGF3 promoter (By similarity). Represses Wnt/beta-catenin-stimulated transcription, probably by targeting CTNNB1 to proteasomal degradation. Binds the DNA sequence 5'- AACAAAT-3'.

SOX7 Antibody (Center) - References

Takash W.,et al.Nucleic Acids Res. 29:4274-4283(2001).

Ota T.,et al.Nat. Genet. 36:40-45(2004).

Kalnine N.,et al.Submitted (MAY-2003) to the EMBL/GenBank/DDBJ databases.

Guo L.,et al.Mol. Cancer Res. 6:1421-1430(2008).